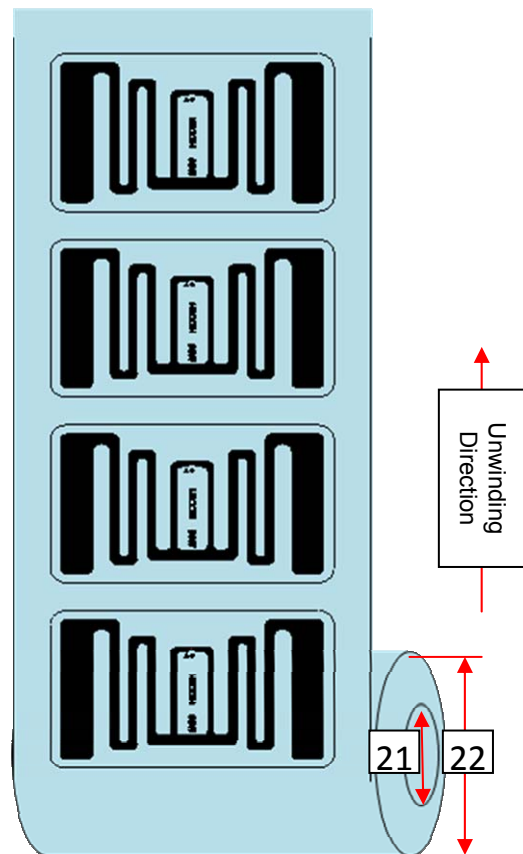
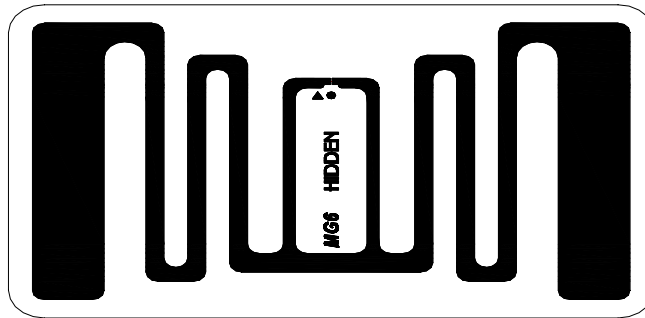


## MG6 34.00X54.00mm White wet inlay

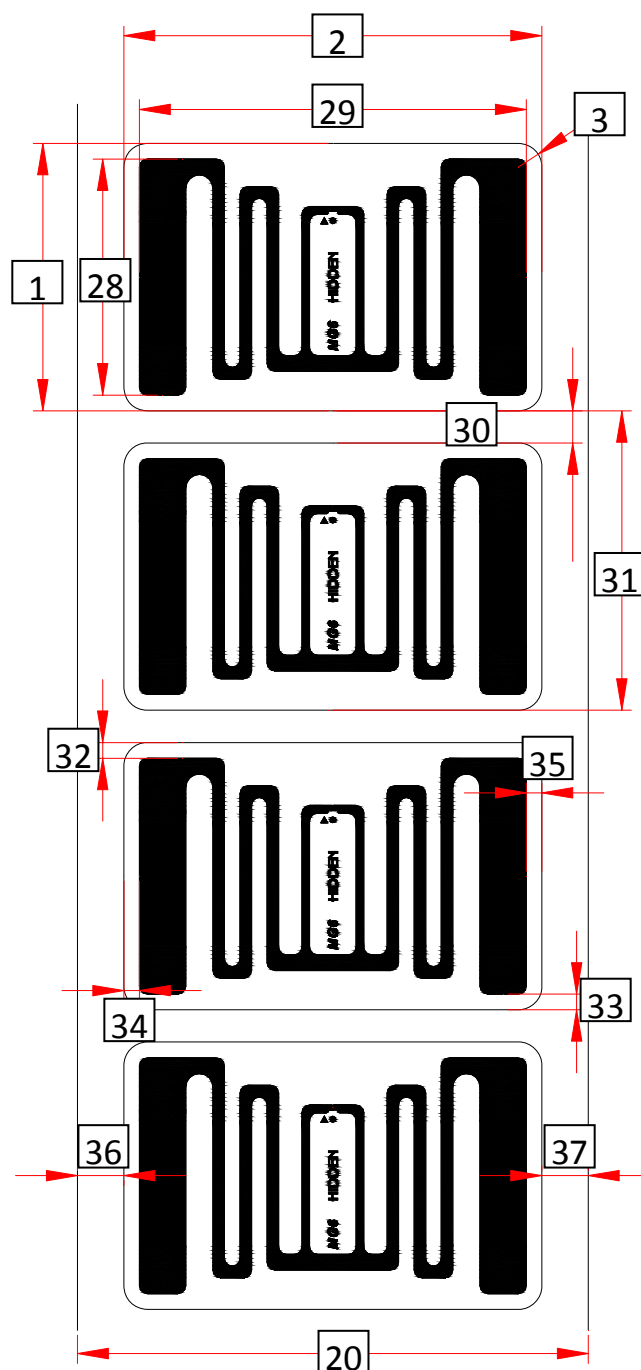
### 1. (Mechanical Characteristics)

#### 1.1 (White wet inlay)

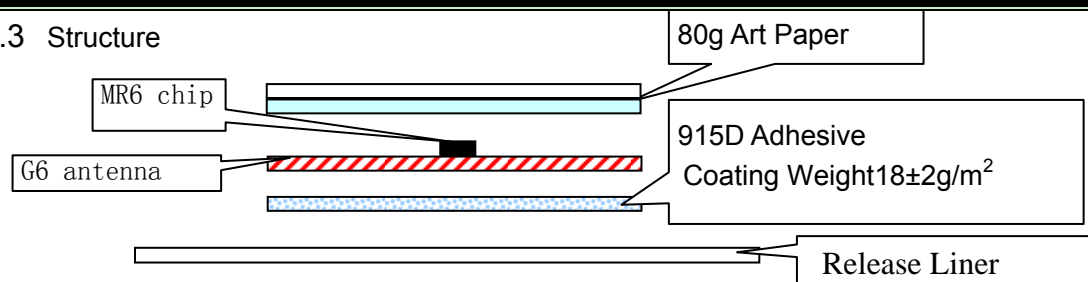


## 1.2 (Dimensions)

Item	No.	Parameter
White wet inlay Length	1	34.00±0.50mm
White wet inlay Width	2	54.00±0.50mm
White wet inlay Corner Radius	3	R=3.00±0.50mm
Liner Width	20	60.00±1.00mm
Core ID	21	3 inch (76.20±0.50mm)
Roll OD	22	≤210.00mm
Antenna Length	28	30.00±0.20mm
Antenna Width	29	50.00±0.20mm
White wet inlay Gap	30	6.01±1.00mm
White wet inlay Pitch	31	40.00±1.00mm
Antenna to PET (top)	32	2.00±1.50mm
Antenna to PET (bottom)	33	2.00±1.50mm
Antenna to PET (left)	34	2.00±1.50mm
Antenna to PET (right)	35	2.00±1.50mm
White wet inlay Edge to Liner Edge (left)	36	3.00±2.00mm
White wet inlay Edge to Liner Edge (right)	37	3.00±2.00mm



## 1.3 Structure



## 2. (Electrical Characteristics)

(Item)		(Description)	(Remarks)
Manufacture / IC		Impinj/Monza R6	
Base Material		PET	
Antenna		Etched Aluminum (10μm) + PET (50μm)	
Protocol		ISO/IEC 18000-6C EPC Class1 Gen2	
Memory	EPC	Up to 96 Bits	Read & Write
	TID	48 Bits	Read Only
	Unique TID	48 Bits	Read Only
	Password	0	
	User	0	
Frequency		860~960MHz	
Operating Mode		Passive	
IC Life		100,000 Programming cycles, 50 years data retention	
ESD Voltage Immunity		Max. 2000V	Human being mode(HBM)

**3. (Environmental Requirement)**

**(Adhesive Application Temperature/Humidity):** [10°C to 40°C] 20% to 80%

**(Operating Temperature):** [-20°C to +50°C]

(Environmental requirements of adhesive may vary on different materials).

**(Shelf Life):**

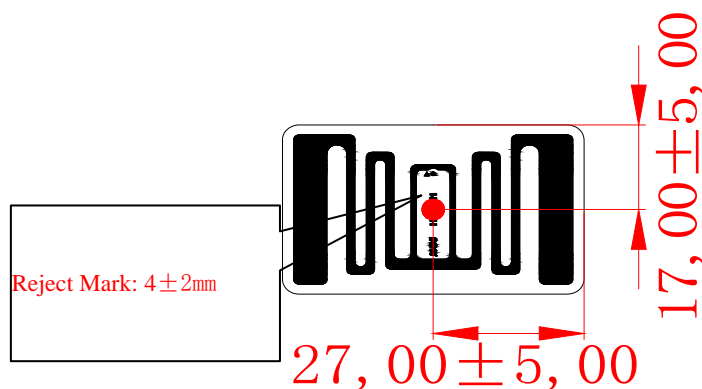
From the date of manufacture, 1 year at 23±5°C / 50%±10%RH), un-seal the vacuum bag and avoid direct sunlight exposure..

Disclaimer: Our recommendations are based on our latest knowledge and experience, we reserve all rights for final explanation

**4. ( Handling Precautions)**

Inlays with ink marks are bad ones. DO NOT USE.

The position of the mark is shown as below.



Keep away from water and collision. DO NOT BEND.

**5. (Packaging)**

Reference Packing: vacuumed packing in ESD bag; 2,500±200 Pcs/roll, 4rolls/ctn.

Note: Vacuum packing provides protection during transportation, for product storage please refer to “No. 3 Environmental Requirement”.(Actual Qty as per Shipping Mark)

